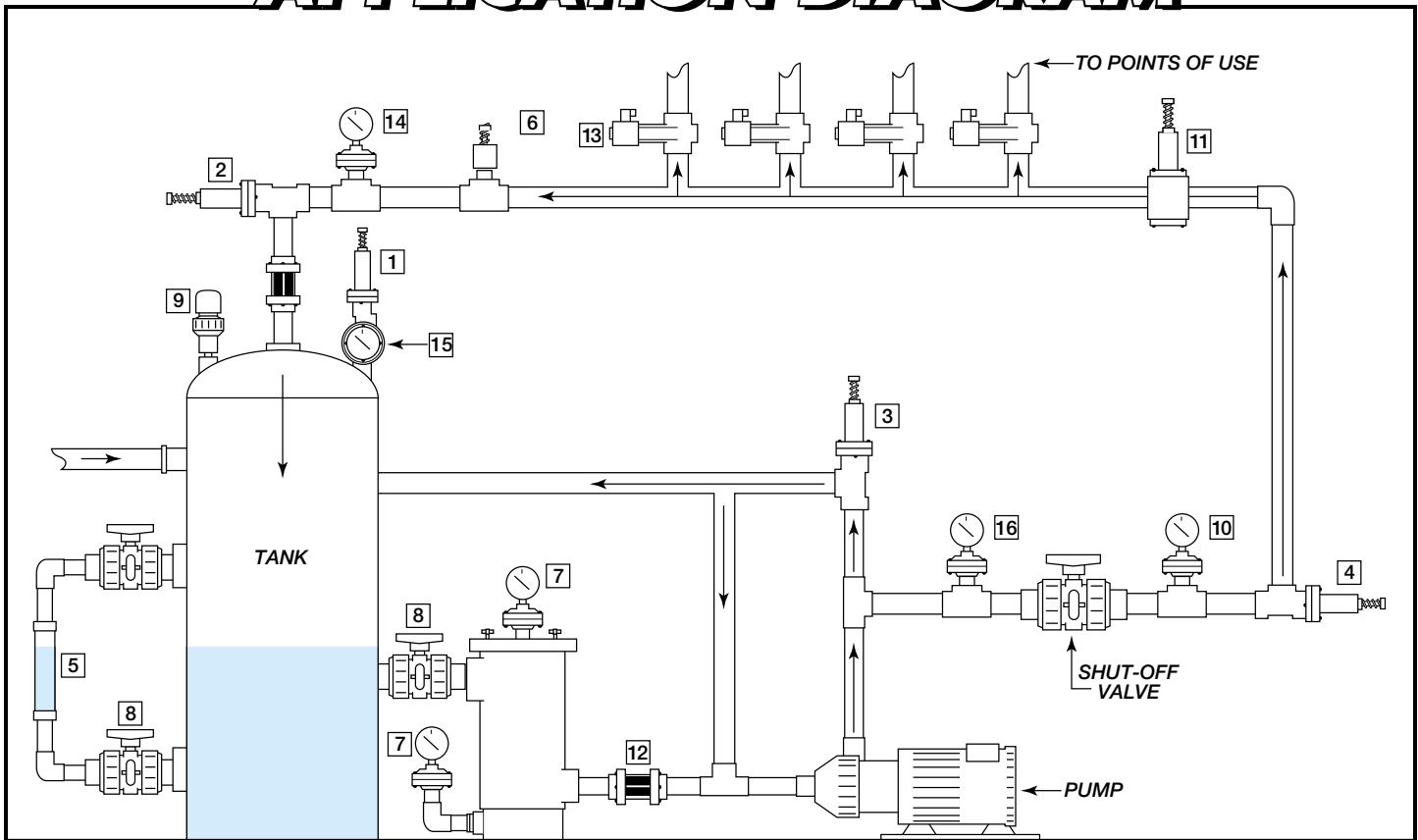


APPLICATION DIAGRAM

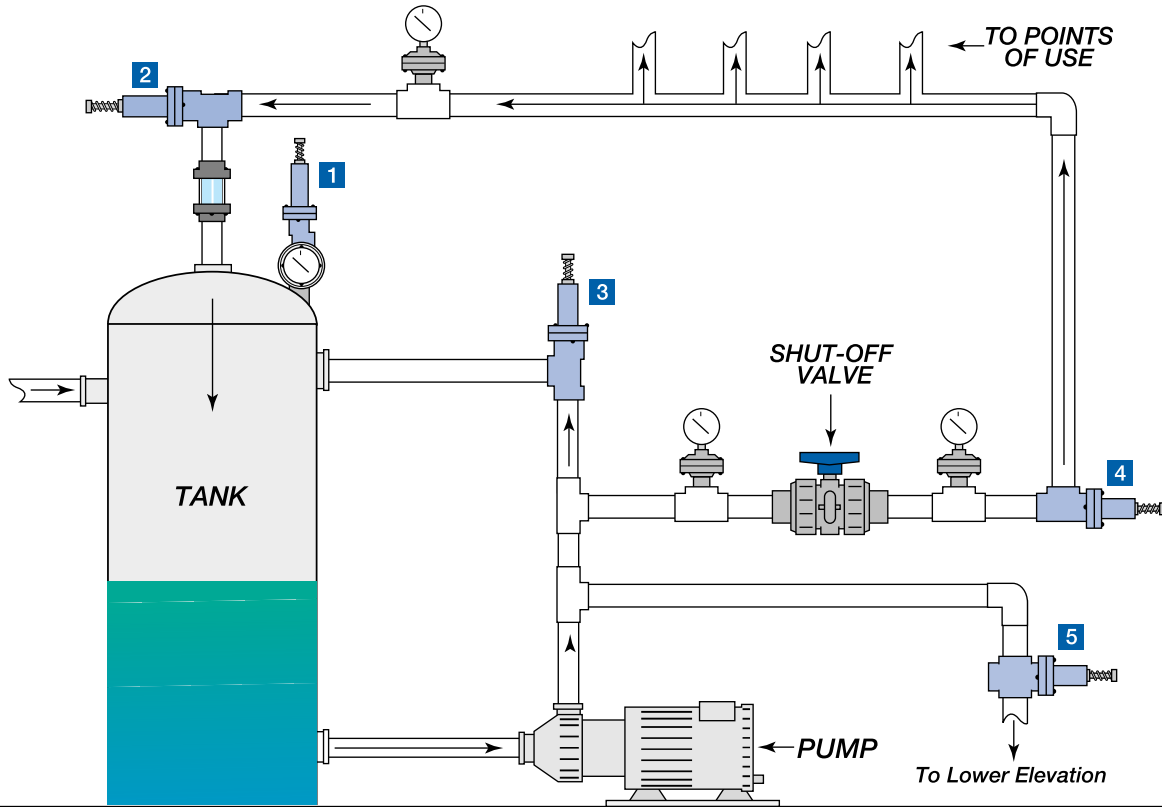


- | | |
|---|--|
| <p>1 RVT – “Straight Relief”
Protects a system (e.g. pump, pipe segment or tank) from excessive pressure (in excess of the set point).</p> <p>2 RVT – “Back Pressure Regulator”
Provides a means of retaining desired system pressure to points in use in upstream lines.</p> <p>3 RVT – “By-Pass Relief”
Protects a pump from “dead heading” by enabling the flow to by-pass an obstruction.</p> <p>4 RVT – “Back Pressure Valve”
Provides back pressure directly on the discharge of a pump to enhance its performance.</p> <p>5 GL – “Level Indicator”</p> <p>6 SWT – “Pressure Switch”
Signals when pressure rises or falls to a preset point.</p> <p>7 GGS (Vacuum) – “Gauge Guard” Determines when cleaning of basket strainer is necessary.</p> | <p>8 MBV – “Manual Ball Valve”
Isolation valve for repair and cleaning.</p> <p>9 VBM – “Molded Vacuum Valve”
Prevents tank collapse during empty cycle.</p> <p>10 GGS (Pressure) – “Gauge Guard”
Verifies system pressure and 4 setting.</p> <p>11 PR – “Pressure Regulator”
Assures pressure to points of use is not excessive.</p> <p>12 GY – “Flow Indicator”
Verifies flow and strainer effectiveness.</p> <p>13 EAST – “Teflon Bellows Solenoid”
Direct acting shutoff valve to points of use.</p> <p>14 GGS (Pressure) – “Gauge Guard”
Verifies system pressure and 2 setting.</p> <p>15 GGS (Pressure) – “Gauge Guard” featuring Back Mount Gauge
Verifies tank pressure and 1 setting.</p> <p>16 GGS (Pressure) – “Gauge Guard”
Verifies system pressure and 3 setting.</p> |
|---|--|

PLASTOMATIC

CEDAR GROVE, NJ 07009 USA • www.plastomatic.com

MULTI-FUNCTION RELIEF VALVE APPLICATION DIAGRAM



- 1** “**Pressure Relief Valve**”, to protect a system (e.g. pump, pipe segment or tank) from excessive pressure (in excess of the set point).
- 2** “**Back Pressure Regulator**”, to provide a means of retaining desired system pressure to points of use in upstream line(s).
- 3** “**By-Pass Relief Valve**”, to protect a pump from “dead heading” by enabling the flow to by-pass an obstruction back to the tank or pump.
- 4** “**Back Pressure Valve**”, to provide back pressure directly on the discharge of a pump to enhance its performance.
- 5** “**Anti-Siphon Valve**”, to prevent unwanted chemical siphoning, if pressure drops to zero, and changes in elevation create negative pressure.

NOTE: Pressure Relief, By-Pass Relief and Anti-Siphon Valves may require piping tee which eliminates the need for 3-port valve.

PLASTOMATIC

CEDAR GROVE, NJ 07009 USA • www.plastomatic.com